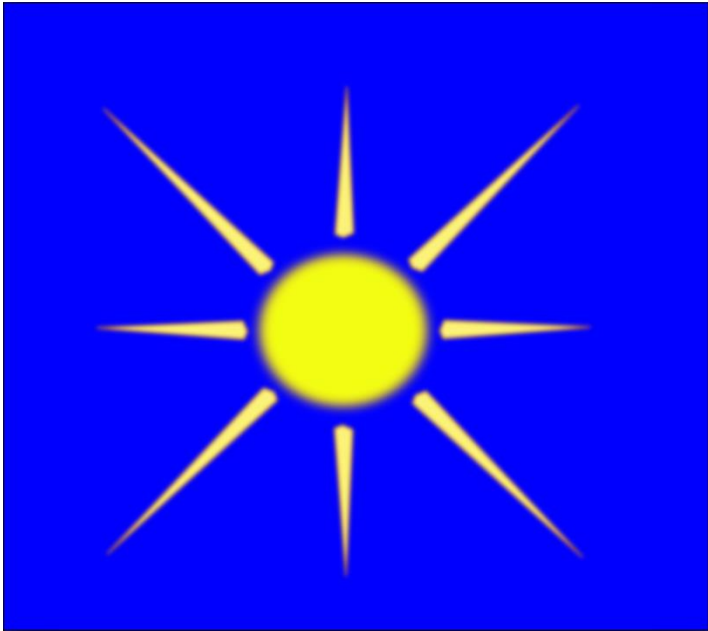


Topological and temporal ecology of the VMS ecosystem

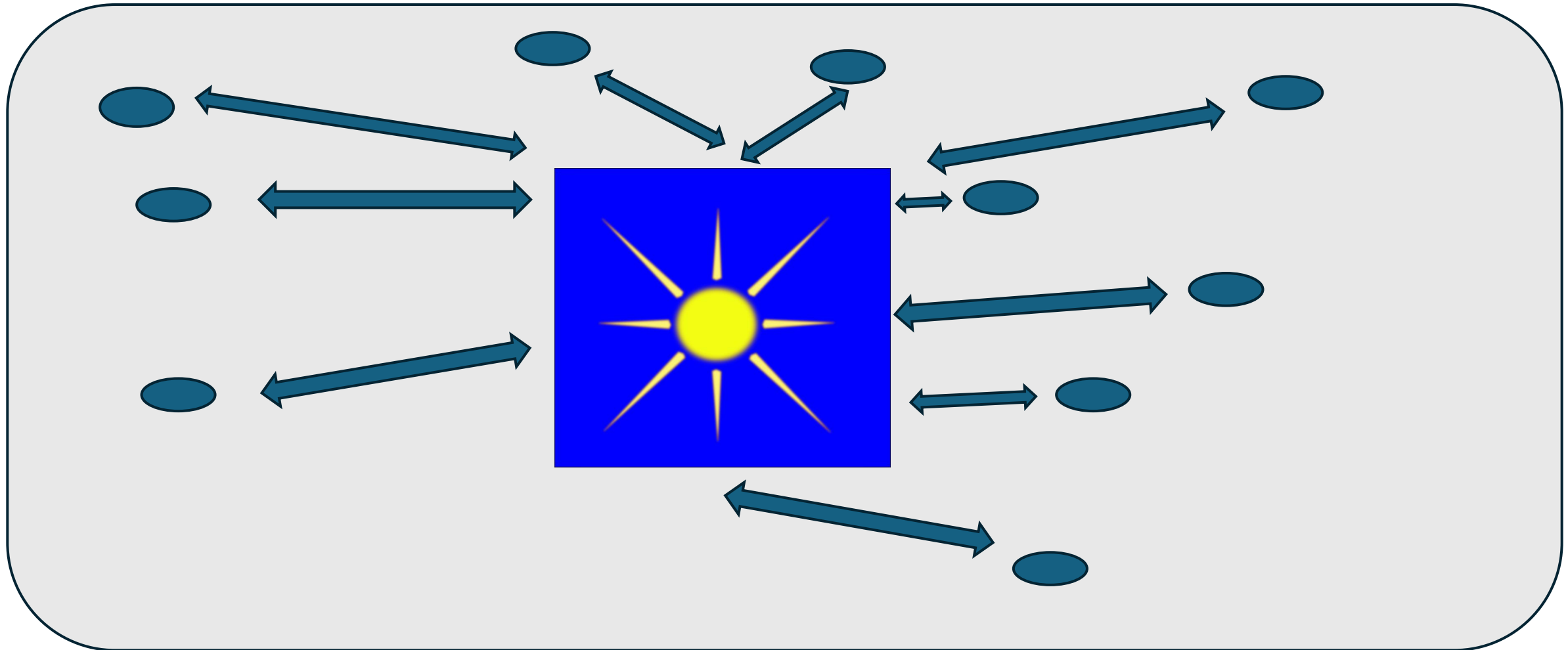
pia-sofer

8-NOV-2024

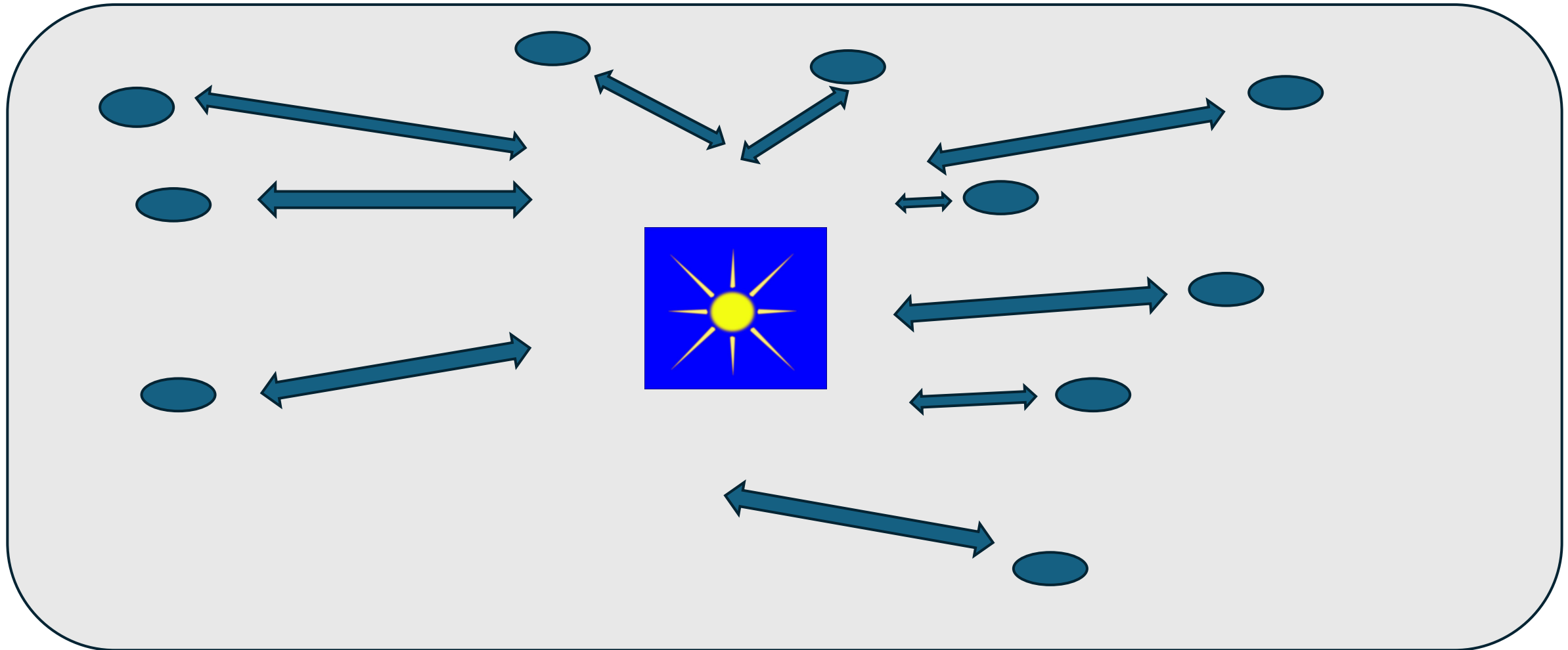
I) Topology.
In the beginning was a powerful center



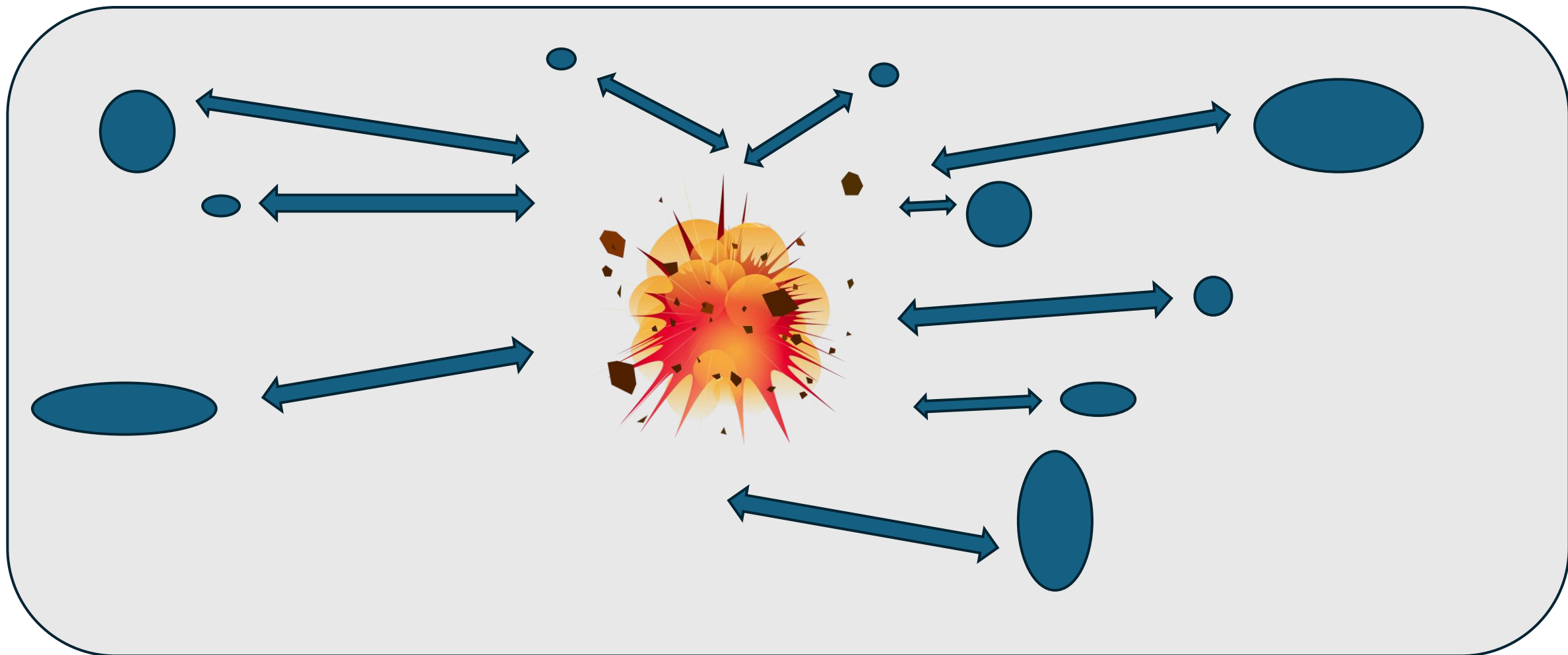
that fed the whole ecosystem



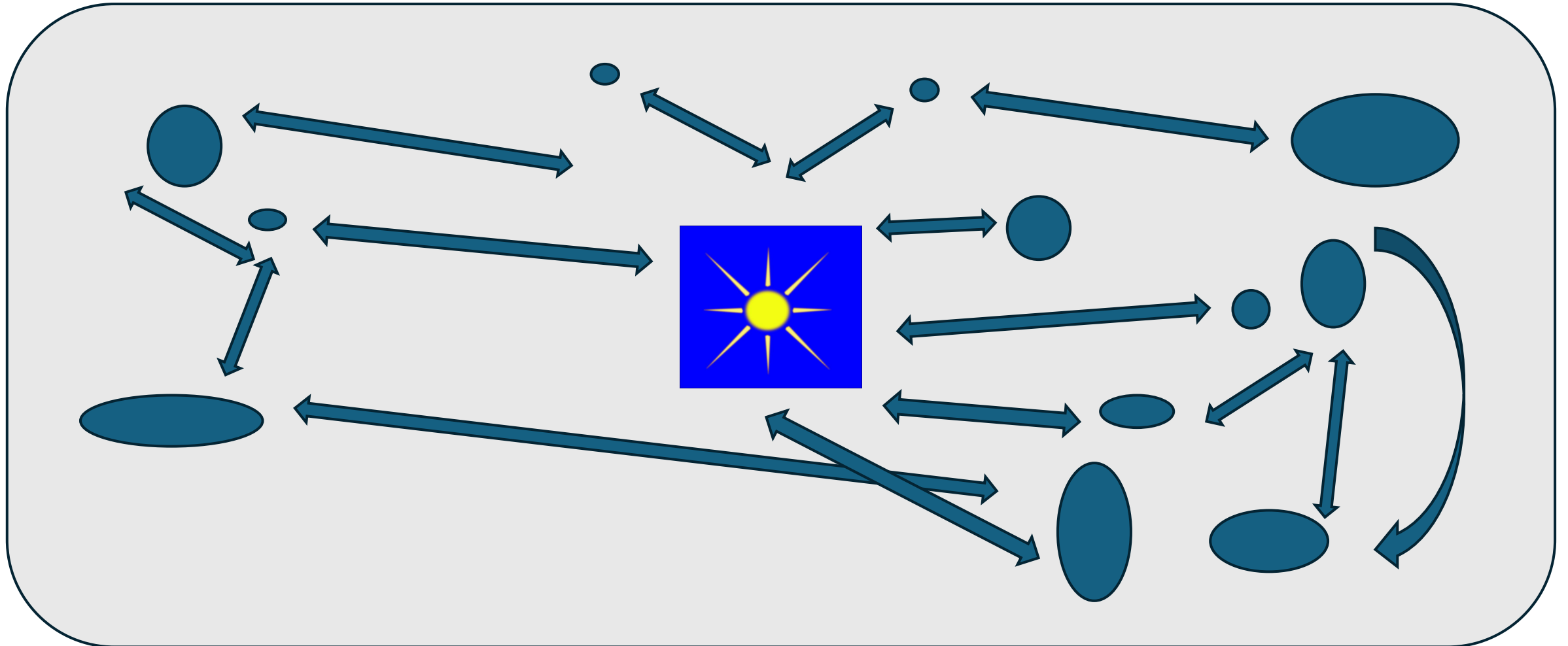
Then the center shrank while remaining centralizing



With the risk of implosion

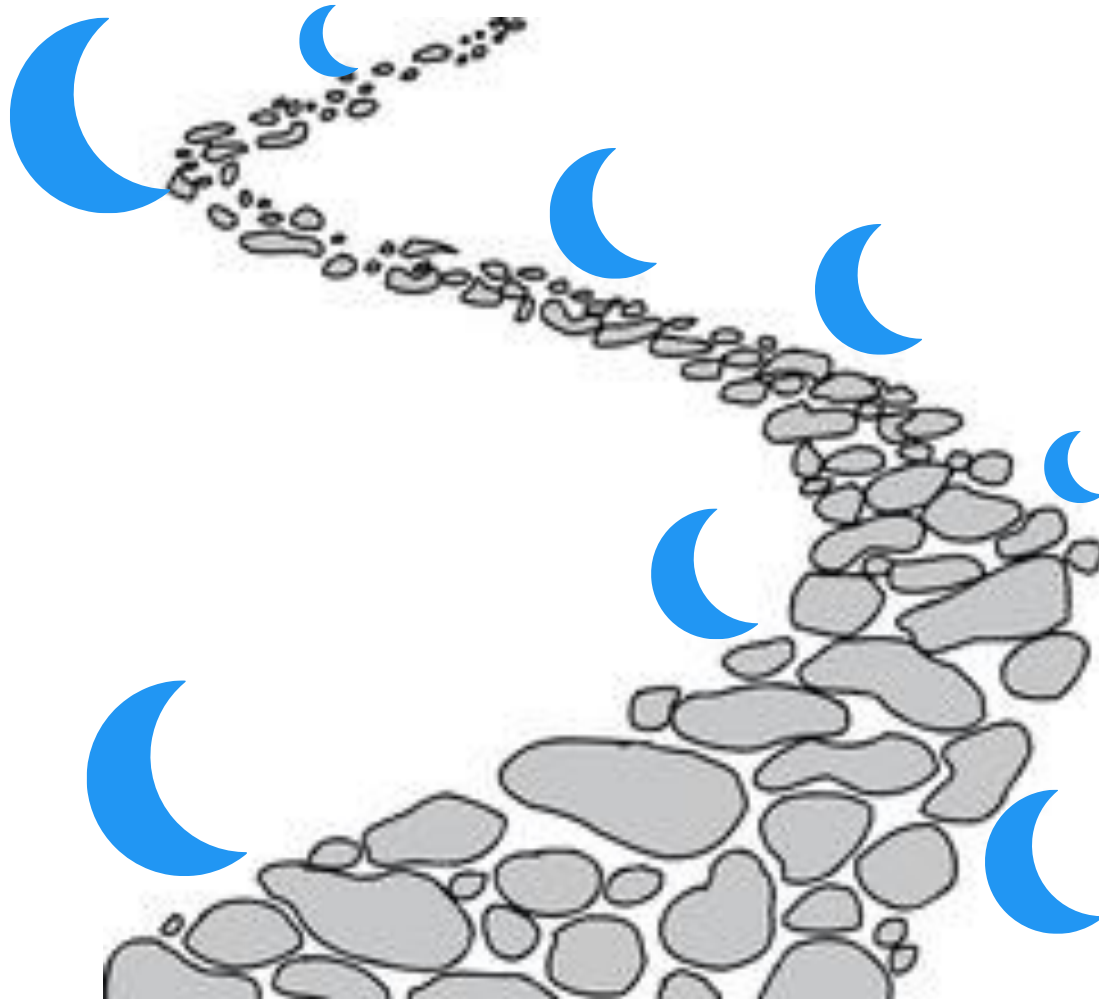


Recovery is only possible when distributed

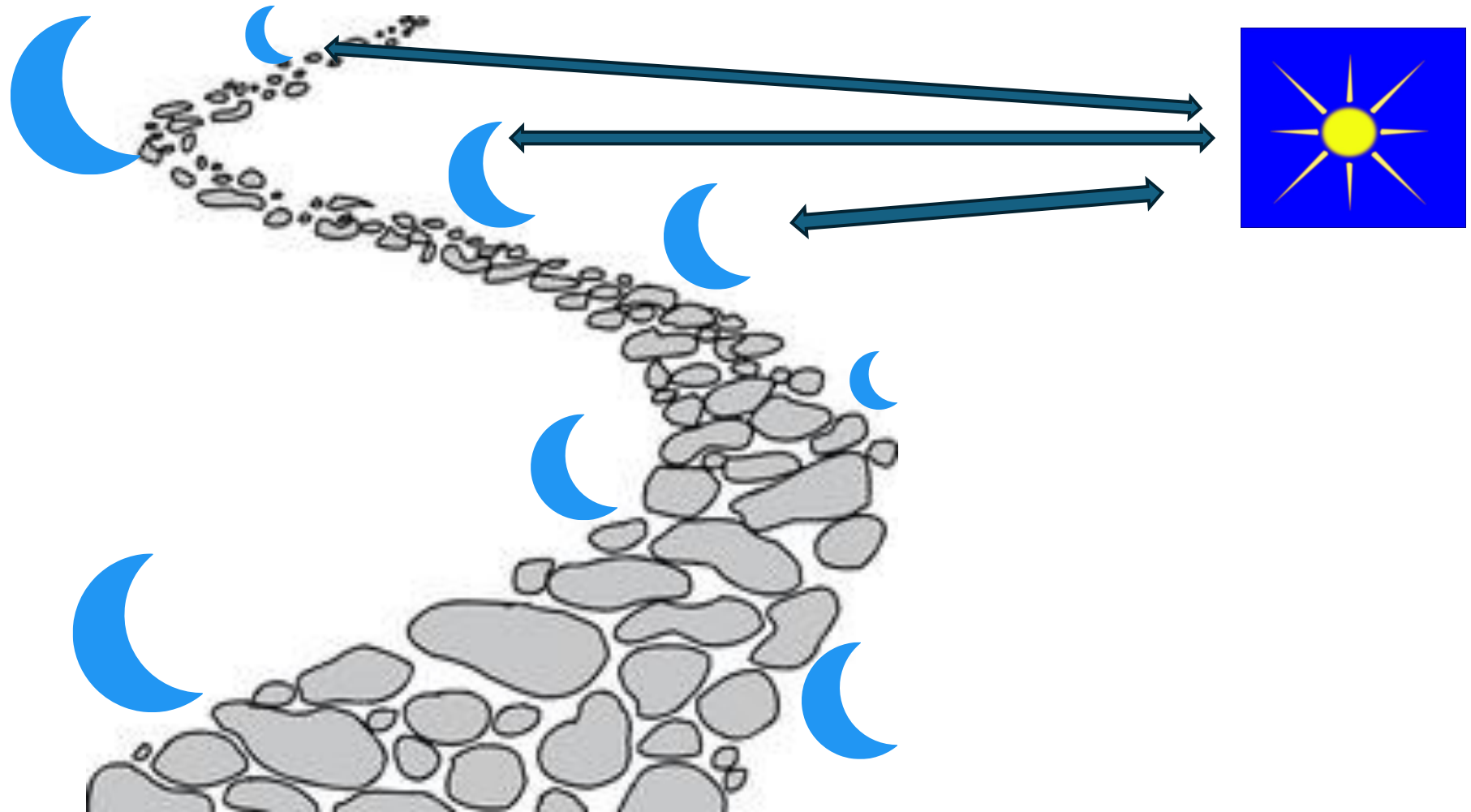


II) Time.

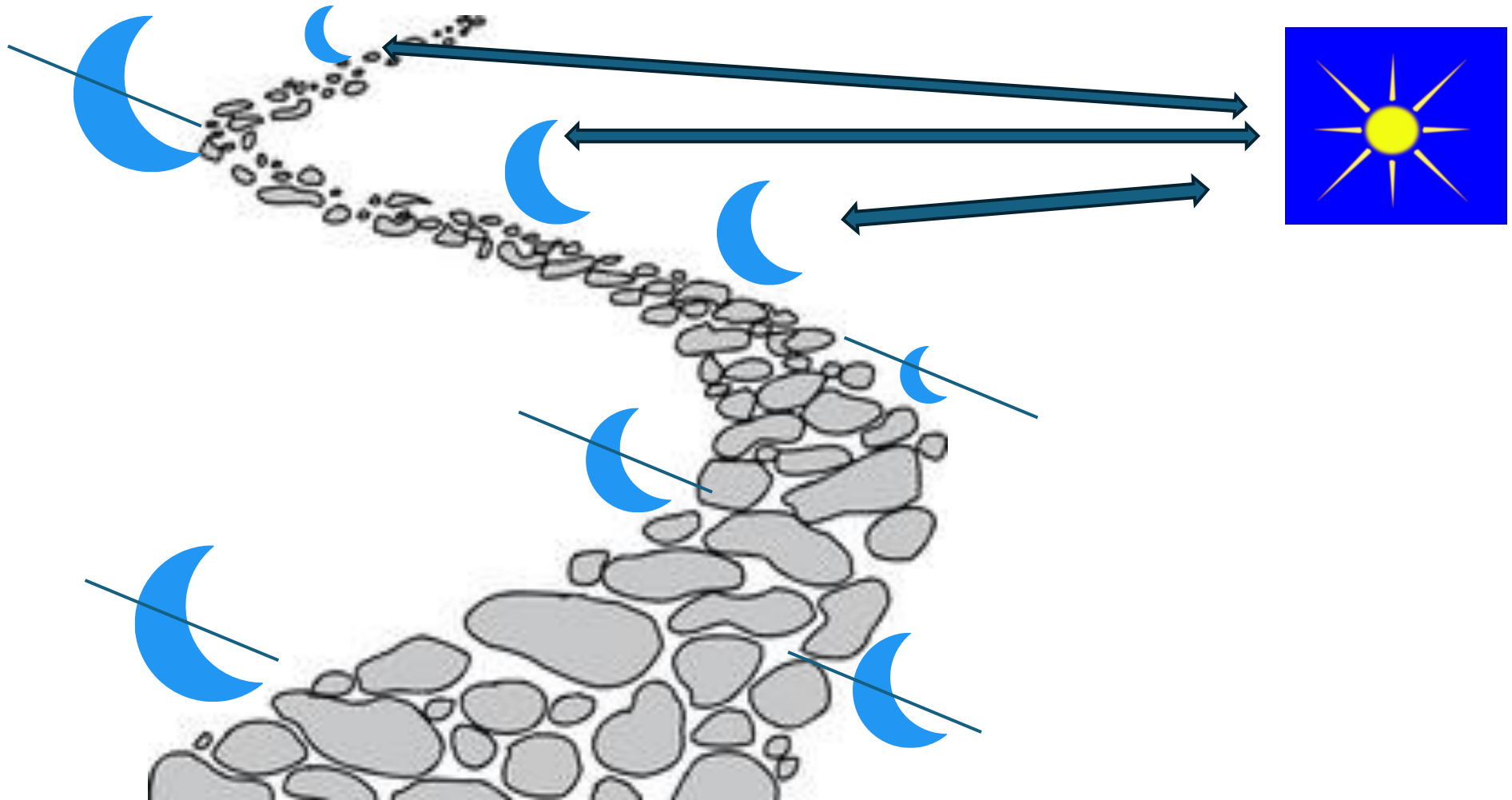
Adoptions are staggered over time



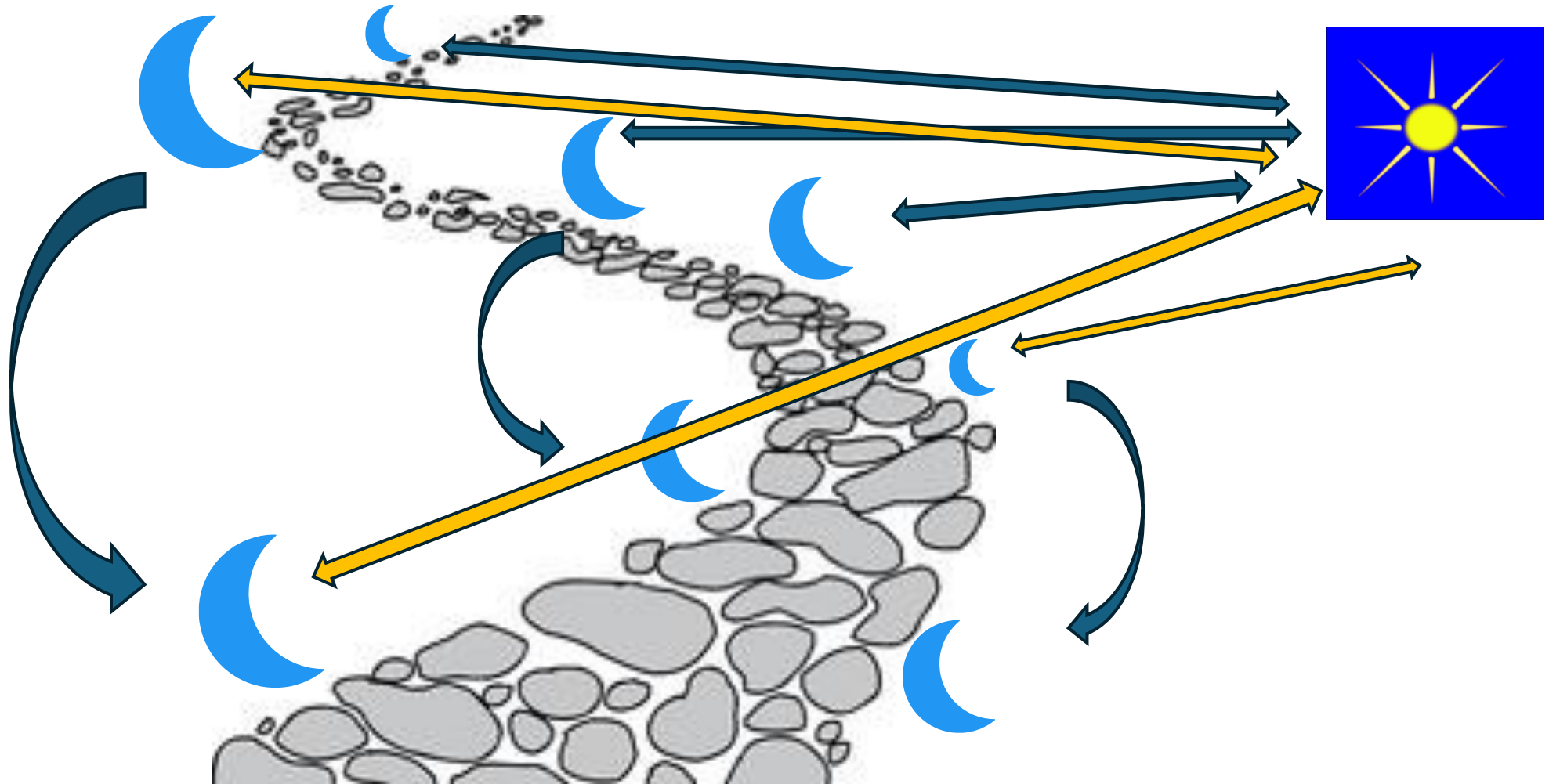
You can decide to serve only the last to arrive



But all the others are lost



Find staggered and distributed services



III) Turn and return

Recovery is in the realm of recycling and the circular economy

